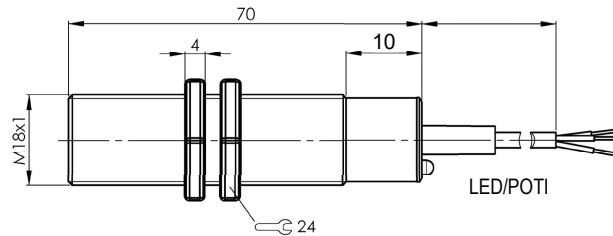


# SPECIALITY CAPACITIVE SENSORS

## Analog Sensor M18 x 1

**Sensing distance Sn: 0...8 mm +/- 10%**



Dimensions are in mm.

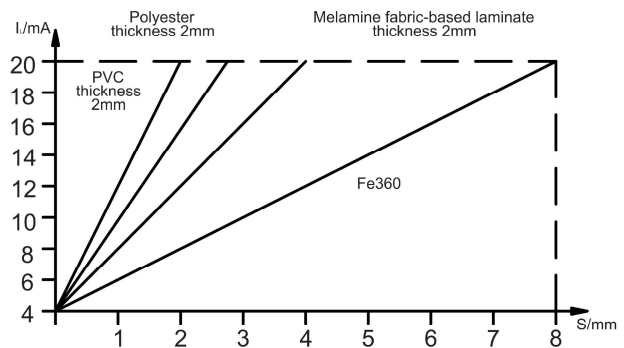
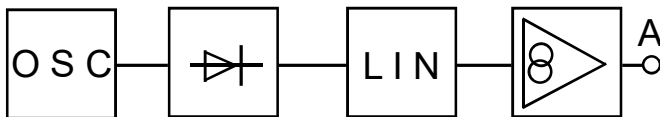
<b>Part Number:</b>
<b>LCC-A-M18-8-4/20-F</b>
<b>flush mount</b>

<b>Material Data:</b>
Housing: Stainless steel
Sensing face: PBT
Connection: 2m PVC cable, 3x24AWG

### Function:

The capacitive distance sensor measures objects that are in its response range without contact. As soon as the object enters it, the electrical field changes its sensing surface and, with it, the output current. In this way, material composition, size and distance of the object to the sensing surface can be determined.

The output signal (4...20mA) can be adapted to the material using the potentiometer (LED lights green). It is evaluated directly on the analog output of the controller. Object color and surface properties do not influence its measurement results. Added plus: A blinking LED signals to the user a high-impedance load.



### This sensor has the following technical specifications:

### Wiring and Mounting Info

Supply voltage $U_B$	12 ... 35 V DC	Ambient temperature $T_a$	-10...+55°C
Rated insulation voltage $U_i$	75 V DC	Switching frequency	100 Hz (3dB limit freq.)
Output current max.	4...20 mA	Supply voltage / Output function indicator	Green LED / Red LED
No-load supply current $I_o$ max.	< 17 mA	Degree of protection as per IEC 60529	IP 67
Polarity reversal protected	Yes	Switching distance adjustable	Yes
Short-circuit protected	Yes, with load monitoring	Approval/Conformity	CE / cULus

Design and technical details subject to change

**Locon Sensor Systems, Inc.**